

What's on May to December 2022



THE WATFORD
PUMPHOUSE
ARTS FOR EVERYONE
1972 - 2022

www.pumphouse.info

Local Board Road, Watford WD17 2JP

Welcome

We would like to thank all our Pump House family of staff, volunteers, groups, audiences, friends and partners who helped us through this challenging period, but we are back in our 50th year, bigger, better and stronger, with a great programme of events for all.

We have recently improved our facilities and we have launched some exciting plans for the future.

We have our most diverse programme of events ever with music, drama, musicals, dance, comedy, art and much more. We have also focused on reducing our environmental footprint, hence this smaller, simpler brochure.

Not all information is available at time of print and new events and updates are being added all the time, so always go to **www.pumphouse.info** for the latest information.

Our dedicated team look forward to seeing you soon.

Lee Farman
Chair of Pump House Theatre and Arts Trust



With a parade, entertainment, food and more Watford is celebrating many anniversaries. The Pump House is proud to be running the events at the Cassiobury Park Bandstand during the afternoon, celebrating the best of Watford culture and art with a theme of the last 100 years.



Pump House is 50

A dedicated bunch of volunteers converted a run down Victorian water pumping station in 1972 in a theatre, which has grown over 50 years into a thriving, loved arts centre. We thank the many people who have been involved to make it the success it is.

We are privileged to appoint two new fantastic patrons who will support our future plans and help raise awareness of the Pump House.

Dan Dark OBE, Executive Vice President of Worldwide Studio Operations for Warner Brothers, and Chris Luff MBE, CEO of Watford & West Herts Chamber of Commerce, have already been tremendous supporters of the Pump House so we're proud to have them join us in these more formal roles.



*Chris Luff, left,
and Dan Dark are
new patrons of the
Pump House*

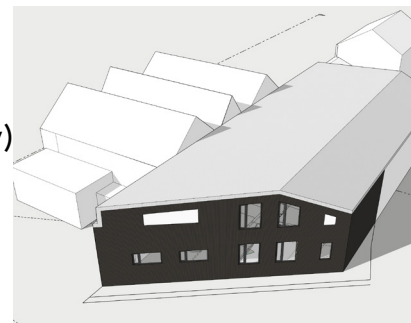


Our Theatre roof is past its useful life and if you have ever performed in our theatre then you will know that our back stage is functional but could be a lot better.

We are launching exciting plans to literally raise the theatre roof.

This plan will give us:

- a watertight, insulated roof and space (saving energy)
- more theatre seats
- better stage facilities
- bigger dressing rooms
- new natural light rehearsal studio space
- additional disabled access and facilities
- addition facilities for the Colne River Room space



We need in the region of £750,000 to enable this phased development.

Go to **www.pumphouse.info/donate** to see how you can support this project and help raise funds

Every Thursday 8 to 11pm

Tickets on the door

Pump House Jazz Club

Founded in 1972 the Pump House Jazz Club is now entering its 50th year and continues to be successful with a variety of exciting Traditional Jazz Bands and a wonderful social atmosphere. Over the next few months regulars will notice a few new names added to our repertoire of great bands and we look forward to plenty of new faces in the audience too.

We are fortunate to be able to encourage the best musicians who travel to The Pump House from far and wide who enjoy playing at our great venue. Please come and support us each week - you will not be disappointed. No booking in advance - just come along - everyone welcome !



Every Friday 7.45 to 11pm

Tickets on the door

Watford Folk Club

The Watford Folk Club has an enviable reputation for the quality and the quantity of its floor singers/ players and for headlining new and established Folk performers. There's been a Folk Club at the Pump House since 1973. Members of the club are active on the folk scene and can often be found performing at local and national festivals and events. Suggested minimum donations: Singarounds £6, Guest Nights £10 - £15

A selection of the upcoming events:

- | | |
|--------|--|
| May 6 | Daria Kulesh £12 |
| May 20 | Belshazzar's Feast £15 |
| Jul 22 | Odette Michell £12 |
| Sep 16 | Nick Dow £12 |
| Sep 30 | "Loss of the Northfleet" £6
(A Play by Alison Raymond) |
| Oct 7 | John Kirkpatrick £15
(Club's 14th Birthday) |
| Nov 18 | Song Competition Final £10 |
| Dec 2 | Alden & Dashwood £15 |

Every Tuesday 8 to 11pm

Tickets on the door

Watford Open Mic

We have been running Watford Open Mic for 12 years now. We offer 10 or 15 min slots and provide full sound. CD's and DVDs available on request for £3

All ages and styles are very welcome, we have a piano on site too.. This is an open mic run by musicians for musicians, our youngest performer was 8, our oldest 90

Come along and meet the team, a friendly welcome awaits..pre book via Facebook to guarantee a spot (members only apply to join)

Entry is £3 - under 16's free.. Come and say hi, a warm welcome awaits

Find us Facebook group pages: Open Mic Watford or Watford Open Mic (apply to join)



Music24

A community music therapy project supporting people diagnosed with dementia and their carers. Provides a creative outlet that maintains and improves physical, mental and emotional well-being



Herts Inclusive Theatre

Uses the arts and wellbeing practices to build confidence, develop skills and give participants and their families memorable, enjoyable life experiences.



Electric Umbrella

At Electric Umbrella we create amazing, live interactive music experiences with learning disabled people. And when our superstars take to the stage, they help change the way the world looks at them - and others. Sessions on Mondays and Fridays.



Cathartic Creative Cafe

A fully inclusive community initiative, providing a warm and caring environment with a creative flare. Usually open first three Thursdays in the month 10am-2pm



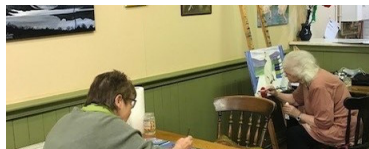
Pump House Clog Morris

The group performs a style of English traditional dance called North West Morris. They rehearse in the winter and in the summer perform at various folk festivals and local events. Meeting most Mondays 7:45pm-9:45pm



Pump House Painters

A friendly and relaxed art session Tuesday's 10am - 2pm for all levels from doodles to masterpieces! Only pay £5 for the sessions you attend. No tuition, we help each other if needed. Bring your own materials. Drop in for a visit



Dance Arc

Dance ARC is an exciting boutique dance school. Offering IDTA and Melody Movement Dance classes for children aged 22 months upwards. Classes Tuesday & Wednesdays at 3:45pm



Francis' Art Club

We are a small very friendly group of trying to be "improving" artists, looking for similar people to join us. Wednesday's 10am 'til 1pm cost £6.00. If you just need a space to get on with your art, this is the place



A GALA NIGHT OF MAGIC AND FUN

PROFITS GO TO SUPPORT THE
UKRAINE HUMANITARIAN APPEAL
AT THE COLNE RIVER STUDIO, WATFORD PUMP HOUSE



FOR UKRAINE

90 MINUTES OF FAMILY FUN
SUNDAY 1ST OF MAY 2022
6:30pm

doors open 6pm

COLNE RIVER STUDIO PUMP HOUSE THEATRE ARTS CENTRE
LOCAL BOARD ROAD LOWER HIGH STREET WATFORD WD17 2JP

£10 for adults £5 children



Book online at
www.ticketsource.co.uk/magic-for-ukraine

Or call the box office on 0333 666 3366

Open Monday to Friday 9am-7pm Saturday 9am-5pm
(except bank holidays)

A fee may be applied for telephone bookings



30 Sep - 2 Oct 2022

WATFORD
fringe
IS BACK!

Drama • Music • Comedy
and more...

**[LIVE
•
STREAMING]**

In its sixth year, Watford's biggest 3 day arts festival, across more than 10 venues in Watford this festival has shows and events for all ages and all tastes.

Music - Rock, Indie, Folk, Jazz, Classical...

Drama - Plays, improv, musicals...

Dance - Contemporary, Kathak, traditional...

Comedy - stand up, sketch shows...

Find out more at www.WatFringe.co.uk



30th SEPT-2nd OCT 2022
Watfringe.co.uk



Watford Jazz Junction presents " Connect with Something New" Saturday 21st May 2022

£10 (Concessions £7.50 & £5)


A relaxed drop-in concert showcasing 3 of the finest original Jazz acts in the UK.

Headlining the concert are Archipelago (Jazz FM Nominated Act of the Year 2021), alongside a stand-alone show from singer/songwriter Jelly Cleaver, and completed by a sonorous performance from saxophone pioneer, Samuel Sharp.

You can come and go as you wish, noting the 3 sets will be performed across the afternoon between 2.30 & 5pm, with hot food and a full bar available.


This is a very special concert offering an audience the chance to hear from some of the most innovative and ground-breaking jazz musicians working on the UK scene.


www.watfordjazzjunction.com



Arthur Miller

The Ride Down Mount Morgan






Be Inspired by amateur theatre

This amateur production is presented by arrangement with Josef Weinberger Ltd

25th - 28th May 2022

The Pump House Theatre
Local Board Road
Watford WD17 2JP



BOX OFFICE

07917 324179

www.belmonttheatre.co.uk

28 June to 2 July



Pump House CYT
www.pumphouseCYT.info



ROALD DAHL'S
Matilda
THE MUSICAL JR.

www.ticketsource.co.uk/pumphousecyt

On With The Show Productions

**PUT ON A SHOW
IN 2 WEEKS!**

1 - 12th August

9.30 - 3pm

A 2 WEEK SUMMER

PERFORMING ARTS PROJECT

FOR AGES 4 TO 16

- DISCOUNT FOR SIBLINGS

"OWTS has become such an
important part of our summer
we plan our holiday around it."

**Singing • Scenery • Props • Design
Acting • Script Writing • Dancing**
RUN BY LOCAL SCHOOL TEACHERS

Places are limited.

To book:

onwiththeshow@ntlworld.com

www.owts.co.uk

The Pump House, Local Board Road, Watford

**INDEPENDENCE
PRODUCTIONS**

@INDEPENDENCE.PROD
ON INSTAGRAM



PUMPHOUSE
THEATRE COMPANY

THE LIGHTNING THIEF THE PERCY JACKSON MUSICAL

**1ST, 2ND, 3RD
SEPTEMBER 2022**

ADULT £14
CONCESSION £12
CHILD £8

WWW.TICKETSOURCE.CO.UK/TLTPRODUCTION

phtc
Pump House Theatre Company

Following the hugely popular TV series charting the history of Edmund Blackadder, Ian Gower and Paul Carpenter have taken the final chapter of this story to tell again the tale of the folly and bravery of World War I. Absurd characters thwart the career of Blackadder and his attempts to get taken away from the front line whilst surviving the horrors with black humour and loyal sidekicks. Despite the comedy, Curtis and Elton's original script shows all the respect and humanity of the war and the sacrifices made by those who served.



BLACKADDER GOES FORTH

A stage play by Ian Gower and Paul Carpenter
adapted from the original TV series
by Richard Curtis and Ben Elton.

With kind permission of Tiger Aspect Productions

19th - 24th September 2022

Evenings at 7.45pm

noda
As inspired by noda theatre



PUMPHOUSE
THEATRE COMPANY

www.pumphousetheatrecompany.com
or call the box office on **0333 666 3366**

Open Monday to Friday 9am-7pm, Saturday 9am-5pm (excluding Bank Holidays)
A £1.30 fee applies for telephone bookings

The Pump House Arts Centre, Local Board Road, Lower High Street, Walford, WD17 2JP

Belmont
Theatre
noda
Be Inspired by amateur theatre

George Bernard Shaw's



Pygmalion

Wed 19th to Sat 22nd October 2022

The Pump House Theatre
Local Board Road
Watford WD17 2JP



BOX OFFICE
07917 324179
www.belmonttheatre.co.uk

WHETSTONE MUSICAL THEATRE GROUP PRESENTS

9 to 5

the MUSICAL

PUMP HOUSE THEATRE , WATFORD, WD17 2DT

9-12 NOV 2022

EVES AT 7:45pm/MATINEE 2:45pm

www.ticketsource.co.uk/whetstonemusicaltheatre9-5

This amateur production is presented by Musical Theatre International (Europe).

All materials supplied by www.MTishows.co.uk

Music and lyrics by Dolly Parton . Book by Patricia Resnick.Originally produced on Broadway by Robert Greenblatt 2009

Looking for venue hire?

If you've got an event or performance you wish to put on, or need space for a rehearsal, exhibition, creative club or meeting, then we've got a range of dynamic spaces available for you.

Contact us at office@pumphouse.info or 01923 241362



Volunteering at the Pump House

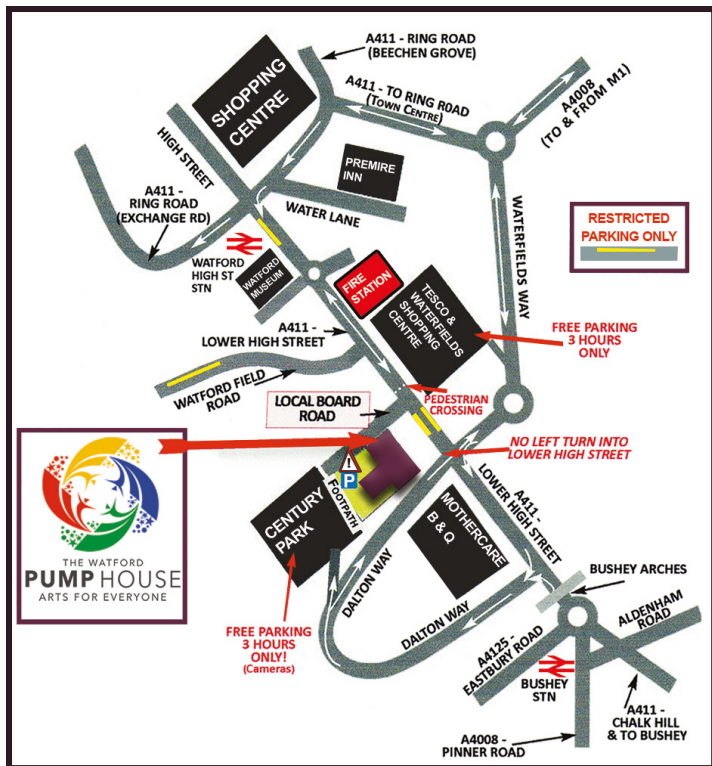
If you'd like to help out at the Pump House, then we'd love to hear from you! The centre is run entirely by volunteers and your support is vital to it's success. Whatever skills you can offer and however little time you can spare - **WE NEED YOU!!** Anything you can help us with such as bar help, maintenance, cleaning, marketing, building, etc, will be very gratefully received.

The bar is an important source of income keeping the Pump House going as we do not receive any regular arts or government funding, so we're always looking for bar volunteers. No experience needed, we'll give you any training required.

Contact volunteer@pumphouse.info



How to find us



www.pumphouse.info

Local Board Road, Watford WD17 2JP